

## Biomedical

-30°C Chest Freezer

138 | 221 | 425 L



MDF-237-PE

**Power to counteract frequent door openings** Biomedical Chest Freezers offer outstanding reliability and performance, as required in a wide variety of storage- and research applications.

### Precise & Uniform Storage

Precise and uniform storage temperatures regardless of ambient conditions through microprocessor temperature control.

### Stable Temperature Control

Manual defrost provides stable temperature control and does not exhibit transient temperature.

### Ease of Use & Intelligent Security

A comprehensive visual and audible alarm system with remote alarm contacts ensures users are aware of any abnormalities and can take appropriate actions.



### Outstanding reliability and performance

The outstanding reliability and performance provided are ideal in a wide variety of storage and research applications.



### Effective storage

In the medical field they provide effective storage of life-saving blood supplies and vaccines, as well as samples for diagnosis.



### Valuable Sample Storage

An ideal storage solution with door lock (key included) for valuable samples.

# Biomedical -30°C Chest Freezer



MDF-437-PE

## Easy to read digital display

Temperature readings are displayed and controlled in the range of -20oC to -30oC.

## Direct Cooling System

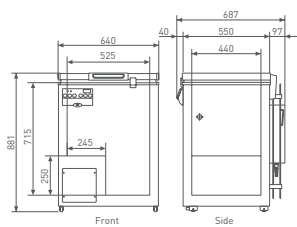
The Biomedical -30oC Chest Freezers feature a direct cooling system for uniform temperature control. Manual defrost ensures a stable environment with no large temperature peaks.

## Visual LED Alarm Alerts

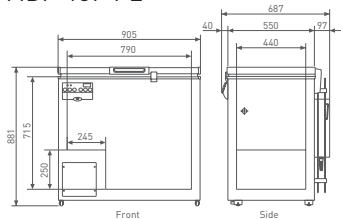
Audible and flashing LED visual alarms alert users to the unlikely event of either a high or low temperature condition to protect stored products.

## Microprocessor Control

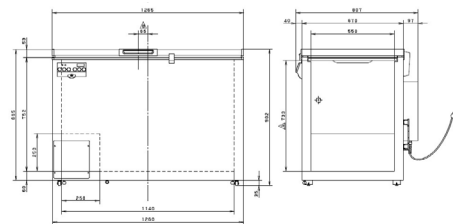
Managed and monitored by an integrated microprocessor controller with a comprehensive alarm system and diagnostic functions.



MDF-137-PE



MDF-237-PE



MDF-437-PE

Model Number		MDF-137-PE	MDF-237-PE	MDF-437-PE
<b>Dimensions</b>				
External Dimensions (W x D x H) <sup>1)</sup>	mm	640 x 687 x 881	905 x 687 x 881	1265 x 807 x 902
Internal Dimensions (W x D x H)	mm	525 x 440 x 715	790 x 440 x 715	1140 x 550 x 733
Volume	litres	138	221	425
Capacity	2" boxes	51	111	201
Net weight (approx)	kg	52	60	81
<b>Performance</b>				
Cooling performance <sup>2)</sup>	°C	-30		
Temperature setting range	°C	-18 ~ -35		
Temperature control range <sup>2)</sup>	°C	-20 ~ -30		
<b>Control</b>				
Controller	Microprocessor			
Display	LED			
Temperature sensor	Thermistor			
<b>Refrigeration</b>				
Cooling method	Direct			
Compressor	W	150	200	250
Refrigerant	HFC			
Insulation material	PUF			
Insulation thickness	mm	55	55	60
<b>Construction</b>				
Exterior Material	Painted Steel			
Interior Material	Coloured aluminium			
Outer lid	qty	1		
Outer lid lock	Y			
Containers / baskets	qty	2	3	4
Max. load per container / basket	kg	10		
Max. load - total	kg	50	80	110
Access port	qty	2		
- position	Right / bottom left			
- diameter	Ø mm	17		
Casters	qty	4 (2 levelling feet)		
<b>Alarms (R = Remote Alarm, V = Visual Alarm, B = Buzzer Alarm)</b>				
Power Failure	V-B-R			
High Temperature	V-B-R			
Low Temperature	V-B-R			
<b>Electrical and Noise Level</b>				
Power Supply	V	230V 50Hz single phase		
Noise Level <sup>3)</sup>	dB [A]	35	41	42
<b>Options</b>				
Storage systems	MDF-13B2-PW, set of two baskets MDF-13B3-PW, set of three baskets			MDF-43B2-PW, set of two baskets, MDF-43B3-PW, set of three baskets
Temperature recorders	- Circular type MTR-G85C-PE - Chart paper RP-G85-PW - Ink pen PG-R-PW - Recorder housing MDF-S740-PW - Continuous strip type MTR-4015LH-PE - Chart paper RP-40-PW - Recorder housing MDF-S3040-PW			set of three baskets

Appearance and specifications are subject to change without notice.

1) Exterior dimensions of main cabinet only, excluding handle and other external projections - See dimensions drawings on website for full details

2) Air temperature measured at freezer centre, ambient temperature +35°C, no load

3) Nominal value - Background noise 20dB

